

Term Information

Effective Term Autumn 2020
Previous Value Spring 2018

Course Change Information

What change is being proposed? (If more than one, what changes are being proposed?)

Addition of a permanent online section

What is the rationale for the proposed change(s)?

To provide more options for both students and instructors

What are the programmatic implications of the proposed change(s)?

(e.g. program requirements to be added or removed, changes to be made in available resources, effect on other programs that use the course)?

None

Is approval of the request contingent upon the approval of other course or curricular program request? No

Is this a request to withdraw the course? No

General Information

Course Bulletin Listing/Subject Area Psychology
Fiscal Unit/Academic Org Psychology - D0766
College/Academic Group Arts and Sciences
Level/Career Undergraduate
Course Number/Catalog 4520
Course Title Social Psychology Laboratory
Transcript Abbreviation Social Psych Lab
Course Description Training in experimental and quantitative methods in social psychology. Experiments include topics such as attitudes, persuasion, social cognition, and group processes.
Semester Credit Hours/Units Fixed: 3

Offering Information

Length Of Course 14 Week, 12 Week, 8 Week, 7 Week, 6 Week, 4 Week
Flexibly Scheduled Course Never
Does any section of this course have a distance education component? Yes
Is any section of the course offered 100% at a distance
Previous Value No
Grading Basis Letter Grade
Repeatable No
Course Components Laboratory, Lecture
Grade Roster Component Lecture
Credit Available by Exam No
Admission Condition Course No
Off Campus Never
Campus of Offering Columbus, Lima, Mansfield, Marion, Newark

Prerequisites and Exclusions

Prerequisites/Corequisites	Prereq: Grade of C- or above in 2220, 2300, and 2367 prior to SU13, 2367.01, 3325, 3325H, or 3375, and enrollment in Psych major.
Exclusions	Not open to students with credit for 4510.
Previous Value	Not open to students with credit for 4510 (510) or 520.
Electronically Enforced	Yes

Cross-Listings

Cross-Listings

Subject/CIP Code

Subject/CIP Code	42.2707
Subsidy Level	Baccalaureate Course
Intended Rank	Junior, Senior

Requirement/Elective Designation

Required for this unit's degrees, majors, and/or minors
The course is an elective (for this or other units) or is a service course for other units

Course Details

Course goals or learning objectives/outcomes	<ul style="list-style-type: none">• Students will be able to demonstrate a fundamental understanding of the components of research methods design• Students will be able to incorporate information from past psychology courses for their own research project• Students will develop effective collaboration skills
Content Topic List	<ul style="list-style-type: none">• Critical analysis of research• Research design and ethics• How to write up research• Data analysis & interpretation
Sought Concurrence	No

Attachments

- PSYCH 4520D-Technical Review.docx: Technical Review
(Other Supporting Documentation. Owner: Paulsen, Alisa Marie)
- Psych 4520D Syllabus_changes highlighted.docx: proposed syllabus
(Syllabus. Owner: Paulsen, Alisa Marie)
- SP20 Psych 4520 Syllabus.pdf: Syllabus
(Syllabus. Owner: Haddad, Deborah Moore)

Comments

COURSE CHANGE REQUEST
4520 - Status: PENDING

Last Updated: Vankeerbergen, Bernadette
Chantal
07/19/2020

Workflow Information

Status	User(s)	Date/Time	Step
Submitted	Paulsen, Alisa Marie	07/09/2020 09:55 AM	Submitted for Approval
Approved	Paulsen, Alisa Marie	07/09/2020 09:55 AM	Unit Approval
Approved	Haddad, Deborah Moore	07/09/2020 10:49 AM	College Approval
Pending Approval	Jenkins, Mary Ellen Bigler Hanlin, Deborah Kay Oldroyd, Shelby Quinn Vankeerbergen, Bernadette Chantal	07/09/2020 10:49 AM	ASCCAO Approval



SYLLABUS

PSYCHOLOGY 4520

Social Psychology Laboratory
Fall 2020 – Online

COURSE OVERVIEW

Instructor

Instructor: Dr. Courtney McGinty

Email address: mcginty.33@osu.edu

Phone number: (724) 255-3049

Office hours: TBD – two hours per week

Course description

Training in experimental and quantitative methods in social psychology. Experiments include topics such as attitudes, persuasion, social cognition, and group processes.

Course learning outcomes

The APA Learning Goals and Outcomes for the Undergraduate Psychology Major are:

- Goal 1: Knowledge base
- Goal 2: Scientific inquiry and critical thinking
- Goal 3: Ethical and social responsibility in a diverse world
- Goal 4: Communication
- Goal 5: Professional development

By the end of this course, students should successfully be able to:

- Describe applications of psychology (1.3)
- Use scientific reasoning to interpret psychological phenomena (2.1)
- Demonstrate psychological information literacy (2.2)
- Engage in innovated integrative thinking and problem solving (2.3)
- Interpret, design, and conduct basic psychological research (2.4)
- Incorporate sociocultural factors in scientific inquiry (2.5)
- Apply ethical standards to evaluate psychological science and practice (3.1)
- Build and enhance interpersonal relationships (3.2)
- Demonstrate effective writing for different purposes (4.1)
- Exhibit effective presentation skills for different purposes (4.2)
- Interact effectively with others (4.3)
- Apply psychological content and skills to career goals (5.1)
- Exhibit self-efficacy and self-regulation (5.2)
- Refine project-management skills (5.3)
- Enhance teamwork capacity (5.4)

HOW THIS COURSE WORKS

Mode of delivery: This course is 100% online. We will have *required weekly meetings* throughout the semester. In addition to these scheduled meetings, you will meet frequently with me and your research group online.

Pace of online activities: This course is divided into **weekly modules**. Students are expected to keep pace with weekly deadlines but may schedule their efforts (and their groups' efforts) within that time frame.

Credit hours and work expectations: This is a **3-credit-hour course**. According to [Ohio State policy](#), students should expect around 3 hours per week of time spent on direct instruction (instructor content and Carmen activities, for example) in addition to 6 hours of indirect instruction (reading, assignment preparation, and meeting with your research group, for example) to receive a grade of (C) average.

Attendance and participation requirements: Because this is an online course, your attendance is based on your online activity and participation. The following is a summary of everyone's expected participation:

- **Live instruction sessions: AT LEAST ONCE PER WEEK**
We will have required weekly meetings. The purpose and structure of these meetings will evolve as the semester progresses and your research projects develop, but you should plan to attend at least one hour of live instruction per week.

- **Participating in online activities: AT LEAST ONCE PER WEEK**
You are expected to log in to the course in Carmen every week. (During most weeks you will probably log in many times.) If you have a situation that might cause you to miss an entire week of class or a live instruction session, discuss it with me *as soon as possible*.
- **Participating in group meetings: AT LEAST ONCE PER WEEK**
Once your research group has been formed, you are expected to meet as a group at least once per week (During most weeks you will probably do this more than once). If you have a situation that might prevent you from meeting with your group, discuss it with me and your group *as soon as possible*.
- **Office hours: OPTIONAL, BUT STRONGLY ENCOURAGED**
Our direct interaction will be very important this semester. I am very available to meet in pre-scheduled Zoom office hours and will also schedule additional meetings outside of those hours as needed.

COURSE MATERIALS AND TECHNOLOGIES

Textbooks

REQUIRED

- There are no required texts for this class.
- All texts for this class will be made available on Carmen or can be downloaded from the OSU library with your OSU student credentials.

Course technology

For help with your password, university email, Carmen, or any other technology issues, questions, or requests, contact the OSU IT Service Desk. Standard support hours are available at <https://ocio.osu.edu/help/hours>, and support for urgent issues is available 24/7.

- **Self-Service and Chat support:** <http://ocio.osu.edu/selfservice>
- **Phone:** 614-688-HELP (4357)
- **Email:** 8help@osu.edu
- **TDD:** 614-688-8743

BASELINE TECHNICAL SKILLS FOR ONLINE COURSES

- Basic computer and web-browsing skills
- Navigating Carmen: for questions about specific functionality, see the [Canvas Student Guide](#).

REQUIRED TECHNOLOGY SKILLS SPECIFIC TO THIS COURSE

- CarmenZoom text, audio, and video chat
- Recording a slide presentation with audio narration
- Recording, editing, and uploading video
- Using academic search engines
- A free student account with perusall.com (<https://app.perusall.com/legal/privacy>)

REQUIRED EQUIPMENT

- Computer: current Mac (OS X) or PC (Windows 7+) with high-speed internet connection
- Webcam: built-in or external webcam, fully installed and tested
- Microphone: built-in laptop or tablet mic or external microphone
- Other: a mobile device (smartphone or tablet) or landline to use for BuckeyePass authentication

REQUIRED SOFTWARE

- [Microsoft Office 365](#): All Ohio State students are now eligible for free Microsoft Office 365 ProPlus through Microsoft's Student Advantage program. Full instructions for downloading and installation can be found [at go.osu.edu/office365help](http://go.osu.edu/office365help).

CARMEN ACCESS

You will need to use [BuckeyePass](#) multi-factor authentication to access your courses in Carmen. To ensure that you are able to connect to Carmen at all times, it is recommended that you take the following steps:

- Register multiple devices in case something happens to your primary device. Visit the [BuckeyePass - Adding a Device](#) help article for step-by-step instructions.
- Request passcodes to keep as a backup authentication option. When you see the Duo login screen on your computer, click "Enter a Passcode" and then click the "Text me new codes" button that appears. This will text you ten passcodes good for 365 days that can each be used once.
- Download the [Duo Mobile application](#) to all of your registered devices for the ability to generate one-time codes in the event that you lose cell, data, or Wi-Fi service.

If none of these options will meet the needs of your situation, you can contact the IT Service Desk at 614-688-4357 (HELP) and the IT support staff will work out a solution with you.

GRADING AND FACULTY RESPONSE

How your grade is calculated

ASSIGNMENT CATEGORY	POINTS
Preparation for project	30 (12%)
Project development	50 (20%)
Presentations	30 (12%)
Final paper and drafts	80 (32%)
Professional development	30 (12%)
Reflection	30 (12%)
Total	250

See course schedule below for due dates.

Late assignments

You are responsible for submitting all assignments on time. The assignments in this course build upon one another very closely, so getting behind can have disastrous effects. For this reason, we have a strict late assignment policy: **all late assignments will automatically receive a 50% grade penalty.** This penalty will only be waived under extreme circumstances.

Grading scale

93–100: A
 90–92.9: A-
 87–89.9: B+
 83–86.9: B
 80–82.9: B-
 77–79.9: C+
 73–76.9: C

70 –72.9: C-
67 –69.9: D+
60 –66.9: D
Below 60: E

Faculty feedback and response time

I am providing the following list to give you an idea of my intended availability throughout the course. (Remember that you can call **614-688-HELP** at any time if you have a technical problem.)

- **Grading and feedback:** For large weekly assignments, you can generally expect feedback within **7 days**.
- **Email:** I will reply to emails within **24 hours on days when class is in session at the university**.

OTHER COURSE POLICIES

Discussion and communication guidelines

The following are my expectations for how we should communicate as a class. Above all, please remember to be respectful and thoughtful.

- **Writing style:** While there is no need to participate in class discussions as if you were writing a research paper, you should remember to write using good grammar, spelling, and punctuation. A more conversational tone is fine for non-academic topics.
- **Tone and civility:** Let's maintain a supportive learning community where everyone feels safe and where people can disagree amicably. Remember that sarcasm doesn't always come across online.

Academic integrity policy

POLICIES FOR THIS ONLINE COURSE

- **Written assignments:** Your written assignments, including discussion posts, should be your own original work. In formal assignments, you should follow APA style to cite the ideas and words of your research sources. You are encouraged to ask a trusted person to proofread your assignments before you turn them in—but no one else should revise or rewrite your work.

- **Reusing past work:** In general, you are prohibited in university courses from turning in work from a past class to your current class, even if you modify it. If you want to build on past research or revisit a topic you've explored in previous courses, please discuss the situation with me.
- **Falsifying research or results:** All research you will conduct in this course is intended to be a learning experience; you should never feel tempted to make your results or your library research look more successful than it was.
- **Collaboration and informal peer-review:** The course includes many opportunities for formal collaboration with your classmates. While project groups and peer-review of major written projects is encouraged, remember that comparing answers on an assignment is not permitted. If you're unsure about a particular situation, please feel free just to ask ahead of time.
- **Group projects:** This course includes group projects, which can be stressful for students when it comes to dividing work, taking credit, and receiving grades and feedback. I have attempted to make the guidelines for group work as clear as possible for each activity and assignment, but please let me know if you have any questions.

OHIO STATE'S ACADEMIC INTEGRITY POLICY

Academic integrity is essential to maintaining an environment that fosters excellence in teaching, research, and other educational and scholarly activities. Thus, The Ohio State University and the Committee on Academic Misconduct (COAM) expect that all students have read and understand the University's [*Code of Student Conduct*](#), and that all students will complete all academic and scholarly assignments with fairness and honesty. Students must recognize that failure to follow the rules and guidelines established in the University's *Code of Student Conduct* and this syllabus may constitute "Academic Misconduct."

The Ohio State University's *Code of Student Conduct* (Section 3335-23-04) defines academic misconduct as: "Any activity that tends to compromise the academic integrity of the University, or subvert the educational process." Examples of academic misconduct include (but are not limited to) plagiarism, collusion (unauthorized collaboration), copying the work of another student, and possession of unauthorized materials during an examination. Ignorance of the University's *Code of Student Conduct* is never considered an excuse for academic misconduct, so I recommend that you review the *Code of Student Conduct* and, specifically, the sections dealing with academic misconduct.

If I suspect that a student has committed academic misconduct in this course, I am obligated by University Rules to report my suspicions to the Committee on Academic Misconduct. If COAM determines that you have violated the University's *Code of Student Conduct* (i.e., committed academic misconduct), the sanctions for the misconduct could include a failing grade in this course and suspension or dismissal from the University.

If you have any questions about the above policy or what constitutes academic misconduct in this course, please contact me.

Other sources of information on academic misconduct (integrity) to which you can refer include:

- The Committee on Academic Misconduct web pages ([COAM Home](#))
- *Ten Suggestions for Preserving Academic Integrity* ([Ten Suggestions](#))
- *Eight Cardinal Rules of Academic Integrity* (www.northwestern.edu/uacc/8cards.htm)

Copyright disclaimer

The materials used in connection with this course may be subject to copyright protection and are only for the use of students officially enrolled in the course for the educational purposes associated with the course. Copyright law must be considered before copying, retaining, or disseminating materials outside of the course.

Statement on Title IX

Title IX makes it clear that violence and harassment based on sex and gender are Civil Rights offenses subject to the same kinds of accountability and the same kinds of support applied to offenses against other protected categories (e.g., race). If you or someone you know has been sexually harassed or assaulted, you may find the appropriate resources at <http://titleix.osu.edu> or by contacting the Ohio State Title IX Coordinator, Kellie Brennan, at titleix@osu.edu

Your mental health

A recent American College Health Survey found stress, sleep problems, anxiety, depression, interpersonal concerns, death of a significant other, and alcohol use among the top ten health impediments to academic performance. Students experiencing personal problems or situational crises during the quarter are encouraged to contact Ohio State University Counseling and Consultation Service (614-292-5766; www.ccs.osu.edu) for assistance, support and advocacy. This service is free and confidential.

Dennis Learning Center

The Dennis Learning Center (<https://dennislearningcenter.osu.edu/>), located within the Younkin success center, has many online and in-person resources available for improving study skills or dealing with test anxiety.

The Writing Center

The Writing Center offers free help with writing at any stage of the writing process for any member of the university community. During their sessions, consultants can work with you on anything from research papers to lab reports, from dissertations to résumés, from proposals to application materials. Appointments are available in-person at 4120 Smith Lab, as well as for online sessions. You may schedule an in-person or online appointment by visiting WCOOnline or by calling 614-688-4291. Please note that the Writing Center also offers daily walk-in hours—no appointment necessary—in Thompson Library. You do not have to bring in a piece of writing in order to schedule a writing center appointment. Many students report that some of their most productive sessions entail simply talking through ideas. Please check out their Individual Writing Support (<https://cstw.osu.edu/writing-center/individual-writing-support>) and Group Writing Support (<https://cstw.osu.edu/writing-center/group-writing-support>) pages for the types of consultations they provide. They also maintain a Writing Resources (<https://cstw.osu.edu/writing-resources>) page with writing handouts and links to online resources.

Student Advocacy

The Student Advocacy Center is an office on campus that works with students who have been significantly ill or experienced other traumatic personal issues to minimize the impact these circumstances may have on their academics. They can provide you with resources to cope with your situation and they can also contact instructors to provide documentation on your behalf. Phone: 614-292-1111, web address: <http://advocacy.osu.edu/>.

Advising

The academic advising office is available to help you navigate your academic requirements. This link has an overview and contact information for the academic services offered on the OSU Columbus campus: <http://advising.osu.edu/welcome.shtml>. I encourage you to visit this link!

Student Services

Student services is available to help you manage many of the electronic services on campus: <http://ssc.osu.edu>.

ACCESSIBILITY ACCOMMODATIONS FOR STUDENTS WITH DISABILITIES

Requesting accommodations

Students with disabilities (including mental health, chronic or temporary medical conditions) that have been certified by the Office of Student Life Disability Services will be appropriately accommodated and should inform the instructor as soon as possible of their needs. The Office of Student Life Disability Services is located in 098 Baker Hall, 113 W. 12th Avenue; telephone 614- 292-3307, slds@osu.edu; slds.osu.edu.

If you would like to request academic accommodations based on the impact of a disability qualified under the Americans with Disabilities Act and Section 504 of the Rehabilitation Act of 1973, contact your instructor privately as soon as possible to discuss your specific needs. Discussions are confidential.

In addition to contacting the instructor, please contact the Student Life Disability Services at [614-292-3307](tel:614-292-3307) or ods@osu.edu to register for services and/or to coordinate any accommodations you might need in your courses at The Ohio State University.

Go to <http://ods.osu.edu> for more information.

Accessibility of course technology

This online course requires use of Carmen (Ohio State's learning management system) and other online communication and multimedia tools. If you need additional services to use these technologies, please request accommodations with your instructor.

- [Carmen \(Canvas\) accessibility](#)
- Streaming audio and video
- Synchronous course tools

COURSE SCHEDULE (TENTATIVE FOR FALL 2020)

All assignments are due at 11:59pm. All assignment deadlines will be on either Monday or Thursday. Any exceptions to these rules will be clearly posted in Carmen through announcements, the course calendar, and assignment instructions.

You can expect to submit an assignment every Monday and Thursday. These assignments will vary in terms of the amount of time required, but time-intensive assignments will be spread

throughout the course. This structure will produce a consistent, “slow and steady” approach to this course.

Week	Dates	Topics	Readings, Assignments, Deadlines	
1	Aug 25 – 30	Course introduction, expectations, and reflections		
			Th	Beginning of semester reflection
2	Aug 31 – Sept 6	Research methods in social psychology	M	Reading assignment #1 (Perusall) Study summary worksheet #1
			Th	Reading assignment #2 (Perusall)
3	Sept 7 – 13	Evaluating research / Group discussions	M	Reading assignment #3 (Perusall) Study summary worksheet #2
			Th	Reading assignment #4 (Perusall) Study summary worksheet #3
4	Sept 14 – 20	Wise interventions in social psychology / Conducting ethical research	M	Reading assignment #5 (Perusall) Wise intervention proposal
			Th	Group preference rankings CITI training
5	Sept 21 – 27	Study design – project topics	M	References
			Th	Research piece #1
6	Sept 28 – Oct 4	Study design – hypotheses	M	Research piece #2
			Th	Research piece #3
7	Oct 4 – 11	Study design – project proposals	M	Research piece #4
			Th	Reading assignment #6 (Perusall) Group reflection #1
8	Oct 12 – 18	Project proposals / Qualtrics	M	Research proposal presentations
			Th	Final Qualtrics surveys
9	Oct 19 – 25	Data collection / Introduction and Method	M	Introduction and Method draft
			Th	Participation assessment #1

Week	Dates	Topics	Readings, Assignments, Deadlines	
10	Oct 26 – Nov 1	Writing workshop / data analysis	M	SPSS test
			Th	Research piece #5
11	Nov 2 – 8	Data analysis	M	Group reflection #2
			Th	
12	Nov 9 – 15	Data analysis / Writing the Results section	M	Response to Introduction and Method draft
			Th	Research piece #6
13	Nov 16 – 22	Writing the APA style paper	M	Discussion draft
			Th	Participation assessment #2
14	Nov 23 – 29	Writing the APA style paper	M	Group reflection #4
			Th	
15	Nov 30 – Dec 4	Professional development	M	Final paper
			Th	End of semester reflection
Finals	Dec 7 – 11	Presenting your work	M	Creative project summary
			Th	

Psychology 4520

Social Psychology Laboratory

The Ohio State University
Spring 2020

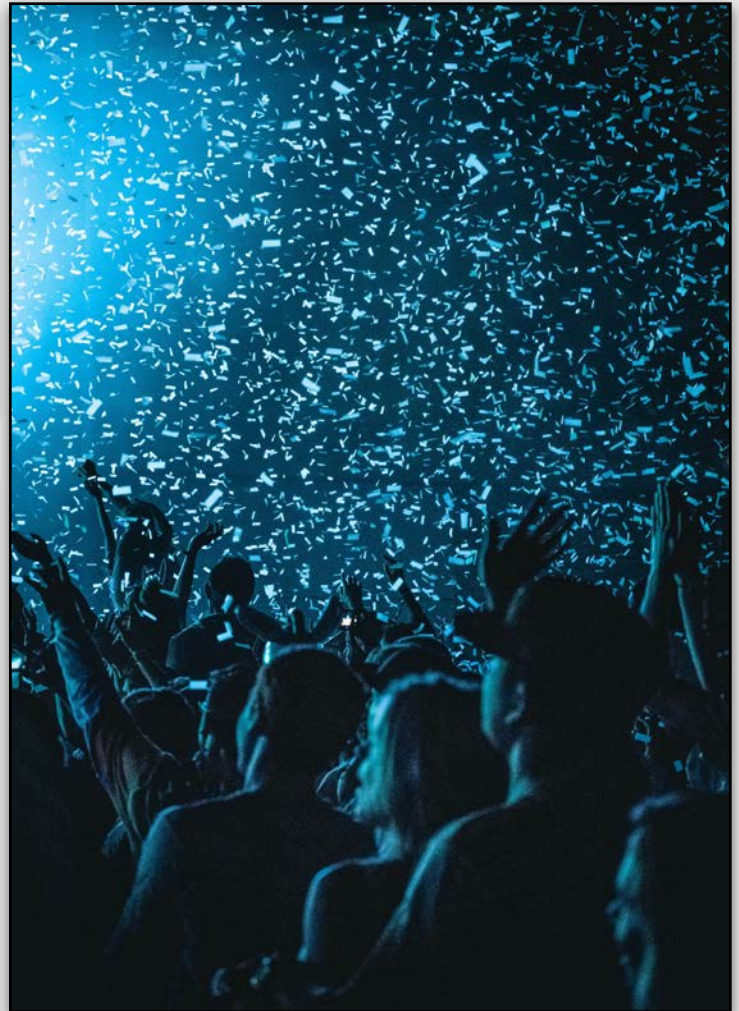
Enarson Classroom Building 014

Section # 21986

Tuesdays and Thursdays
11:10 AM -12:30 PM

Section # 22002

Tuesdays and Thursdays
12:45 PM - 2:05 PM



Welcome!

This is a fun and challenging upper-level course that will give you experience with real experimental research in social psychology.

You will find out how the experiments you read about in textbooks are done – in fact, you'll do one yourself in a small group!

Instructor Information

Dr. Courtney McGinty

Email Address: mcginty.33@osu.edu

NOT @buckeyemail !



Emails sent to
@buckeyemail will
NOT reach me



carmen
ZOOM

Office Hours: Tuesday and Thursday afternoons.

Other times are available by emailed appointment, including phone calls or virtual meetings through CarmenZoom.

Course Specifics

Course Description: Training in experimental and quantitative methods in social psychology. Experiments include topics such as attitudes, persuasion, social cognition, and group processes.

Prerequisites: A grade of C- or above in 2220, 2300, and 2367 prior to SU13, 2367.01, 3325, 3325H, or 3375, and enrollment in Psych major. Not open to students with credit for 4510 (510) or 520.

Course Format: Ever-changing! The course format will be a mix of class discussions, demonstrations, small group work, group presentations, and very occasional lectures.

Goals and Objectives

Our goals and objectives center around **transferrable skills** that will help you achieve your future goals.

Each assignment will be connected to at least one skill. We will conclude the semester with an assessment of your progress in each of these areas and how you can continue to develop them to achieve your future goals.

- Communication skills (1)
- Critical thinking & research skills (2)
- Collaboration skills (3)
- Self-management skills (4)
- Professional skills (5)
- Technology skills (6)
- Ethical skills (7)

Resources

Technology: We will use Carmen extensively. All assignments must be submitted on Carmen. I expect you to visit our page frequently, as I will post frequent announcements.

We will also frequently use technology in the classroom. If you are able, please bring your laptop or tablet to every class.

Readings: There is no assigned textbook for this course. Readings will be posted on Carmen and can be found through the OSU library. Readings not available through the library website will be posted on Carmen for your to download

I will also post many additional resources about social psychology, research methods, statistics, and professional development. These are not required, but may be useful as you progress through the course.

carmen
COURSES



Communication

If you are having any trouble with this class (or just want to talk!) come see me EARLY and OFTEN! Don't be shy. I want you to do well in this class and beyond, and I can best help you if we start communicating early.

E-mail: Email is preferred over messages through Carmen. I will reply to e-mails within 24 hours on week days. If you do not receive a timely reply, your email probably did not reach me.

For extensive questions or to discuss serious issues, I encourage you to meet with me in person.

Grading: For large assignments, you can generally expect feedback within 7 days.

Feedback: You will receive extensive feedback in this course. For each assignment, I do my best to identify your strengths and specific areas for improvement. I expect you to read the feedback and incorporate it into your subsequent assignments. Please contact me as early as possible with questions about your feedback.

Late Assignment Policy

10am

All assignments are due at 10am, unless otherwise indicated on Carmen and on the course schedule.

You are responsible for submitting all assignments on time. The assignments in this course build upon one another very closely, so getting behind can have disastrous effects. For this reason, we have a strict late assignment policy: **all late assignments will automatically receive a 50% grade penalty.** This penalty will only be waived under very extreme circumstances.

It is also YOUR responsibility to verify that your assignments are successfully submitted to Carmen. I will not re-grade incorrectly submitted assignments.

Attendance Policy

Attendance is a crucial aspect of this course, particularly because you will be working in groups. It is extremely important that you respect me and your classmates by attending class and showing up on time.

I understand, though, that life happens and you may not be able to attend every class. We certainly don't want you to come when you are sick! **You are allowed TWO unexcused absences and TWO unexcused late arrivals throughout the semester.** Subsequent unexcused absences and late arrivals will affect your grade, as outlined below.

If you know that you have to miss class for an event later in the semester, be extra vigilant so you do not squander your unexcused absences.

Each unexcused absence: **3-point reduction** in your attendance grade.

Each unexcused late arrival: **1.5-point reduction** in your attendance grade. Any arrival after I have started class (*even one minute*) will count as a late arrival

The following are considered **excused absences**, with appropriate documentation (in advance whenever possible):

- Graduate school interviews
- OSU-sponsored athletic events
- Funeral for a loved one
- Mental health or medical emergencies



Weddings, family vacations, job fairs, sleeping in, etc. are **NOT** considered excused absences.



Occasionally, you may need to miss class because of an illness or travel schedule but you're still able to attend virtually via Skype or FaceTime. If you are able to participate in this manner, you will not be counted as absent

Expectations

What you can expect from me:

I will present course material in a clear, interesting manner and will provide you with hands-on experience and examples of difficult concepts.

I will be available to discuss course material and provide assistance with assignments. I am very available to meet, both in person and virtually. Just send me an email!

I will provide you with timely and useful feedback on all assignments. If an assignment is graded by our course assistant, I will provide very detailed guidelines and approve all feedback before publishing it.

I will get excited about and encourage you to pursue your personal goals. I want this course to meet your needs, regardless of where you plan to take your Psychology degree!



What I expect from you:

You are expected to stay on top of the course schedule and the Carmen page. I may not specifically reference each Carmen resource in class, but expect you to be using them.

You are expected to actively participate in class. There will be no hiding out in this class - I expect you to be active in each class session. This will look different as the semester progresses. If you're ever unsure of what is expected of you, just ask!

You are expected to contribute to your group project consistently throughout the semester.

You are expected to treat me and your classmates with courtesy and respect. One way to show respect is to arrive on time for every class session. If there are circumstances that require you to miss class, I expect you to let your group members know prior to the start of class. You are responsible for all material covered and all announcements that were made, whether you were in class or not.

Overview of Activities and Assignments

Below is a list of each assignment you will complete for this course. As you can see, you will do a lot! Each assignment directly relates to one or more transferrable skill and most assignments build upon each other toward your final project. There is no “busy work” in this class!

See the course schedule for due dates and Carmen for specific instructions and rubrics for each assignment

Social Psychology & Experimental Design

- Research project data
- Study summary worksheet #1
- Study summary worksheet #2
- Study summary worksheet #3
- Wise intervention proposal

Study Design

- CITI training
- References
- Research pieces
 - Research topic proposal
 - Description of variables
 - Hypotheses
 - Operationalized variables
- Research proposal presentation
- Qualtrics survey

Data Analysis

- SPSS test
- Research pieces
 - Data analysis plan
 - Description of results

Writing and Presenting

- Introduction and Method draft
- Response to Introduction and Method feedback
- Results draft
- Response to Results feedback
- Final paper
- Poster draft
- Final poster

Professional Development

- Group assessment
- Participation assessments
- Attendance
- Research piece #7 - Individual reflection



Grading Policy

Most assignments in this class will be completed by you as an individual, but quite a few will be completed as a group. All group members will receive the same grade, excepting extreme circumstances.

You will receive extensive feedback on each assignment, in addition to your grade. Bring all grade questions to me within one week of receiving the grade.

I do not discuss any grade-related issues over email. Please set up a time to speak with me in person.

Ask for all of the help/support you need and take advantage of all of the extra credit opportunities throughout the semester but please (for your own sake) do not do this at the very end. There will be no personalized rounding schemes or extra assignments or discussions/negotiations about how to boost your grade once the class is over, and that is for a few reasons.

Entertaining these kinds of requests would mean preferential treatment to some students (i.e. those with the type of privilege they feel that this is something they can ask for) and not others, and that is not an equitable teaching practice.

Letter	Points Earned	Percentage
A	223.2 - 240	93 - 100
A-	216 - 223.1	90 - 92.9
B+	208.8 - 215.9	87 - 89.9
B	199.2 - 208.7	83 - 86.9
B-	192 - 199.1	80 - 82.9
C+	184.8 - 191.9	77 - 79.9
C	175.2 - 184.7	73 - 76.9
C-	168 - 175.1	70 - 72.9
D+	160.8 - 167.9	67 - 69.9
D	141.7 - 160.7	60 - 66.9
E	0 - 141.6	0 - 59

Grades do **NOT** determine your self worth.

You have talents and interests, and
you are a human being, not a
letter grade or GPA.



I repeat,
grades do **NOT** determine your self worth.

Grading Scale

Assignment	Possible Points	Associated Skills
Social Psych and Experimental Design Background		
Study summary worksheet #1	5	2
Research project data	5	2,7
Study summary worksheet #2	5	2
Study summary worksheet #3	5	2
<i>Wise intervention proposal</i>	5	2,3
<i>CITI training</i>	v/a	2,7
Study Design		
References	8	2,3,5,6
<i>Research piece #1 - Research topic description</i>	3	1,2,3
<i>Research piece #2 - Description of variables</i>	3	1,2,3
<i>Research piece #3 - Hypotheses</i>	3	1,2,3
<i>Research piece #4 - Operationalized variables</i>	6	1,2,3, 6
<i>Research proposal presentation</i>	15	1,3,5,6
<i>Qualtrics surveys</i>	10	2,3,6,7
Writing and APA Style		
Introduction draft	10	1,2,5
Method draft	10	1,2,5,7
<i>Results draft</i>	10	1,2,3,5
Final paper	50	1,2,5
Professional Development		
<i>Group assessment</i>	5	3,4,5
Response to paper feedback (3 total)	9	4,5
Attendance	12	4
Participation assessment #1	8	3,4,5
Participation assessment #2	8	3,4,5
Research piece #7 - Individual reflection	3	1,4,5
Data Analysis and Results		
<i>SPSS test</i>	10	3,5,6
<i>Research piece #5 - Data analysis plan</i>	6	1,3,6
<i>Research piece #6 - Description of results</i>	6	1,2,3
Poster Session		
<i>Poster draft</i>	10	1,2,3,5,6
<i>Final poster</i>	5	1,2,3,5,6
Poster session participation	5	1,3,5,6
TOTAL	240	

Schedule

The full course schedule is available to download on Carmen.

The course schedule is flexible and will certainly adjust as the semester progresses. Research is a fluid process! All schedule changes will be announced in class and on Carmen.

In the unlikely event that the university closes, we may have alternate assignments or use virtual meetings to keep us on schedule.

SPECIAL NOTE! This class does not have a typical final exam. Instead, we will have a formal poster session to present your research.

It will be held during a common final time and not during the time that the university registrar indicates for our class period.

Our poster session will be:
Wednesday 4/22 from 6-7:45pm

© Randy Glasbergen
glasbergen.com



**“It’s a new time management app.
When you click the icon, your
calendar disappears!”**

University-Wide Policies and Resources

Academic Integrity Policies for this course

- **Written assignments:** Your written assignments should be your own original work. In formal assignments, you should follow APA style to cite the ideas and words of your research sources. You are encouraged to ask a trusted person to proofread your assignments before you turn them in--but no one else should revise or rewrite your work.
- **Reusing past work:** In general, you are prohibited in university courses from turning in work from a past class to your current class, even if you modify it. If you want to build on past research or revisit a topic you've explored in previous courses, please discuss the situation with the instructor.
- **Collaboration and informal peer-review:** The course includes many opportunities for formal collaboration with your classmates. While study groups and peer-review of major written projects is encouraged, remember that comparing answers on a quiz or assignment is not permitted. If you're unsure about a particular situation, please feel free just to ask ahead of time.

Ohio State's academic integrity policy: It is the responsibility of the Committee on Academic Misconduct to investigate or establish procedures for the investigation of all reported cases of student academic misconduct. The term "academic misconduct" includes all forms of student academic misconduct wherever committed; illustrated by, but not limited to, cases of plagiarism and dishonest practices in connection with examinations. Instructors shall report all instances of alleged academic misconduct to the committee (Faculty Rule 3335-5-487). For additional information, see the Code of Student Conduct <http://studentlife.osu.edu/csc/>.

Copyright disclaimer: The materials used in connection with this course may be subject to copyright protection and are only for the use of students officially enrolled in the course for the educational purposes associated with the course. Copyright law must be considered before copying, retaining, or disseminating materials outside of the course.

Statement on Title IX: Title IX makes it clear that violence and harassment based on sex and gender are Civil Rights offenses subject to the same kinds of accountability and the same kinds of support applied to offenses against other protected categories (e.g., race). If you or someone you know has been sexually harassed or assaulted, you may find the appropriate resources at <http://titleix.osu.edu> or by contacting the Ohio State Title IX Coordinator, Kellie Brennan, at titleix@osu.edu

More University-Wide Policies and Resources

Accessibility accommodations for students with disabilities:

Students with disabilities (including mental health, chronic or temporary medical conditions) that have been certified by the Office of Student Life Disability Services will be appropriately accommodated and should inform the instructor as soon as possible of their needs. The Office of Student Life Disability Services is located in 098 Baker Hall, 113 W. 12th Avenue; telephone 614- 292-3307, slds@osu.edu; slds.osu.edu.

Campus resources for success and self-care

This link has an overview and contact information for the academic services offered on the OSU Columbus campus: <http://advising.osu.edu/welcome.shtml>

You may experience a range of issues that can cause barriers to learning, such as strained relationships, increased anxiety, alcohol/drug problems, feeling down, difficulty concentrating and/or lack of motivation. OSU offers services to assist you with these and other concerns you may experience. If you or someone you know are suffering from any of the aforementioned conditions, you can learn more about the broad range of confidential mental health services available via the Office of Student Life's Counseling and Consultation Service (CCS) by visiting ccs.osu.edu or calling 614-292-5766. CCS is located on the 4th Floor of the Younkin Success Center and 10th Floor of Lincoln Tower. You can reach an on call counselor when CCS is closed at 614-292-5766 and 24 hour emergency help is also available through the 24/7 National Suicide Prevention Hotline at 1-800-273- TALK or at suicidepreventionlifeline.org. Also, the Psychological Services Center (PSC) in the Psychology Building provides free psychotherapy for students, staff, and community members. Drop in, or call (614) 292-2059 for more information.

The Dennis Learning Center (<https://dennislearningcenter.osu.edu/>), located within the Younkin success center, has many online and in-person resources available for improving study skills or dealing with test anxiety.

The Student Advocacy Center is an office on campus that works with students who have been significantly ill or experienced other traumatic personal issues to minimize the impact these circumstances may have on their academics. They can provide you with resources to cope with your situation and they can also contact instructors to provide documentation on your behalf. Phone: 614-292-1111, web address: <http://advocacy.osu.edu/>.

Arts and Sciences Distance Learning Course Component Technical Review Checklist

Course: PSYCH 4520D

Instructor: Courtney McGinty

Summary: Social Psychology Laboratory

Standard - Course Technology	Yes	Yes with Revisions	No	Feedback/ Recomm.
6.1 The tools used in the course support the learning objectives and competencies.	X			<ul style="list-style-type: none"> • Office 365 • Carmen • Perusall
6.2 Course tools promote learner engagement and active learning.	X			<ul style="list-style-type: none"> • Carmen Discussion Board • Carmen Wiki • Zoom
6.3 Technologies required in the course are readily obtainable.	X			All are available for free
6.4 The course technologies are current.	X			All are updated regularly.
6.5 Links are provided to privacy policies for all external tools required in the course.	X			No external tools are used
Standard - Learner Support				
7.1 The course instructions articulate or link to a clear description of the technical support offered and how to access it.	X			Links to 8HELP are provided.
7.2 Course instructions articulate or link to the institution's accessibility policies and services.	X			Please include statement a
7.3 Course instructions articulate or link to an explanation of how the institution's academic support services and resources can help learners succeed in the course and how learners can obtain them.	X			Please include statement b
7.4 Course instructions articulate or link to an explanation of how the institution's student services and resources can help learners succeed and how learners can obtain them.	X			Please include statement c
Standard – Accessibility and Usability				
8.1 Course navigation facilitates ease of use.	X			Recommend using the Carmen Distance Learning "Master Course" template developed by ODEE and available in the Canvas Commons to provide student-users with a consistent user experience in terms of navigation and access to course content.
8.2 Information is provided about the accessibility of all technologies required in the course.	X			University accessibility policy included.
8.3 The course provides alternative means of access to course materials in formats that meet the needs of diverse learners.	X			Statement is included with contact information on how to make accommodations.
8.4 The course design facilitates readability	X			
8.5 Course multimedia facilitate ease of use.	X			All assignments and activities that use the Carmen LMS with embedded multimedia facilitates ease of use. All other multimedia resources facilitate ease of use by being available through a standard web browser

Reviewer Information

- Date reviewed: 7/6/20

- Reviewed by: Ian Anderson

Notes: Good to go!

^aThe following statement about disability services (recommended 16 point font):
Students with disabilities (including mental health, chronic or temporary medical conditions) that have been certified by the Office of Student Life Disability Services will be appropriately accommodated and should inform the instructor as soon as possible of their needs. The Office of Student Life Disability Services is located in 098 Baker Hall, 113 W. 12th Avenue; telephone 614- 292-3307, slds@osu.edu; slds.osu.edu.

^bAdd to the syllabus this link with an overview and contact information for the student academic services offered on the OSU main campus.
<http://advising.osu.edu/welcome.shtml>

^cAdd to the syllabus this link with an overview and contact information for student services offered on the OSU main campus. <http://ssc.osu.edu>. Also, consider including this link in the “Other Course Policies” section of the syllabus.